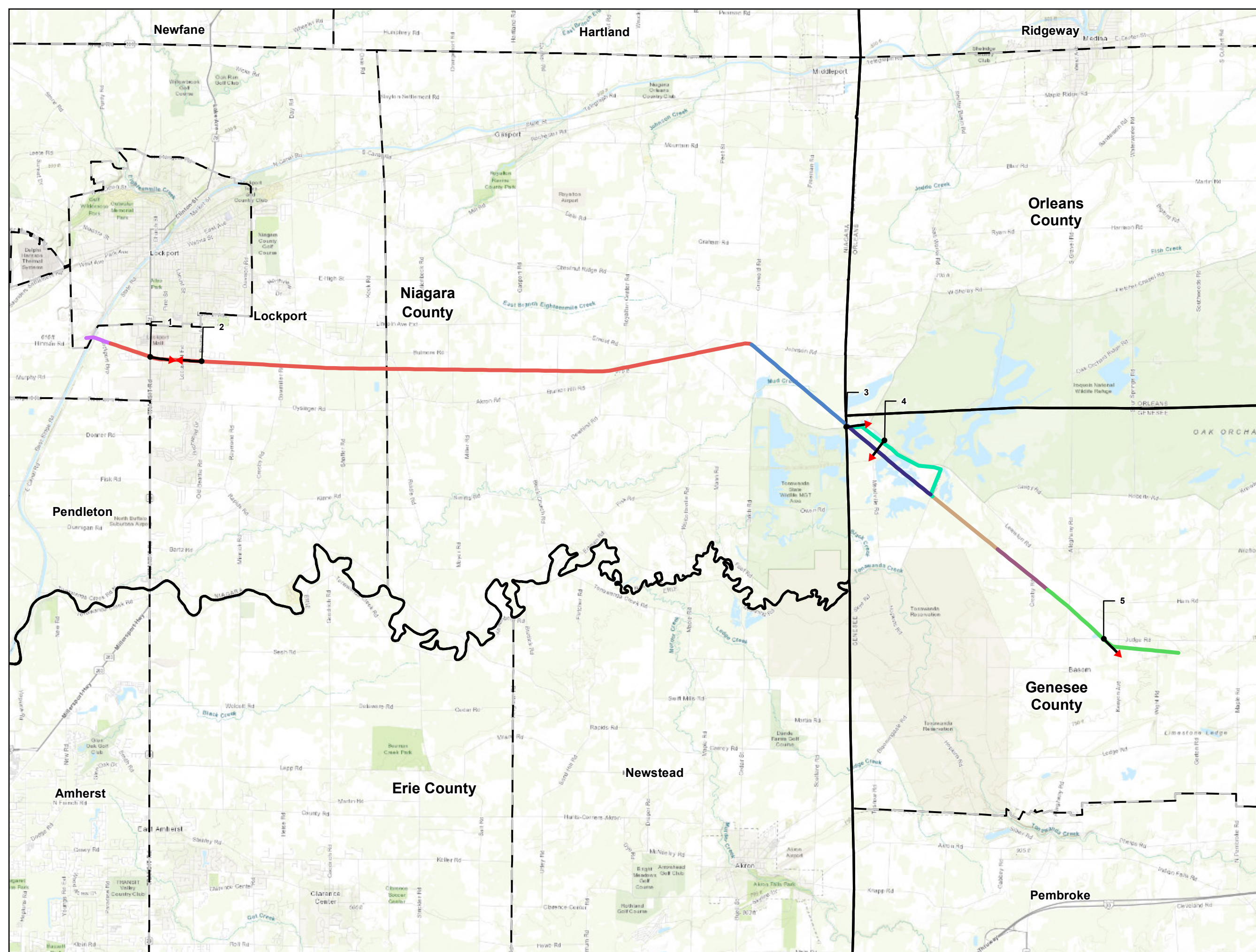
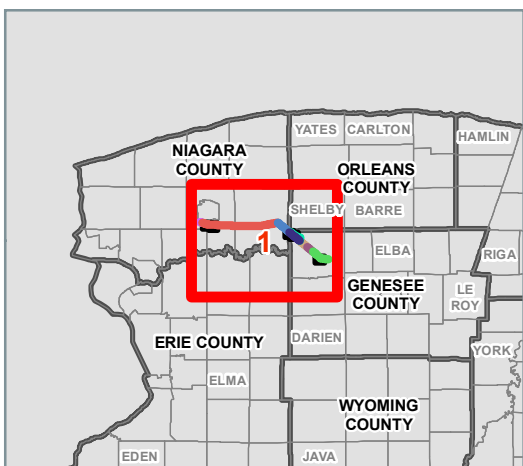
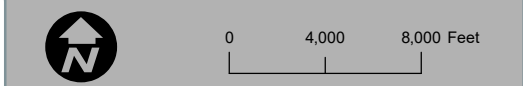


- Simulation Viewpoint
- Segment 1
- Segment 2
- Segment 3
- Segment 4 Existing
- Segment 4 Relocated
- Segment 5
- Segment 6
- Segment 7
- Town Boundary
- County Boundary

Map Revision Date: 8/19/2021 Aerial Date: 8/19/2021



View Point Overview

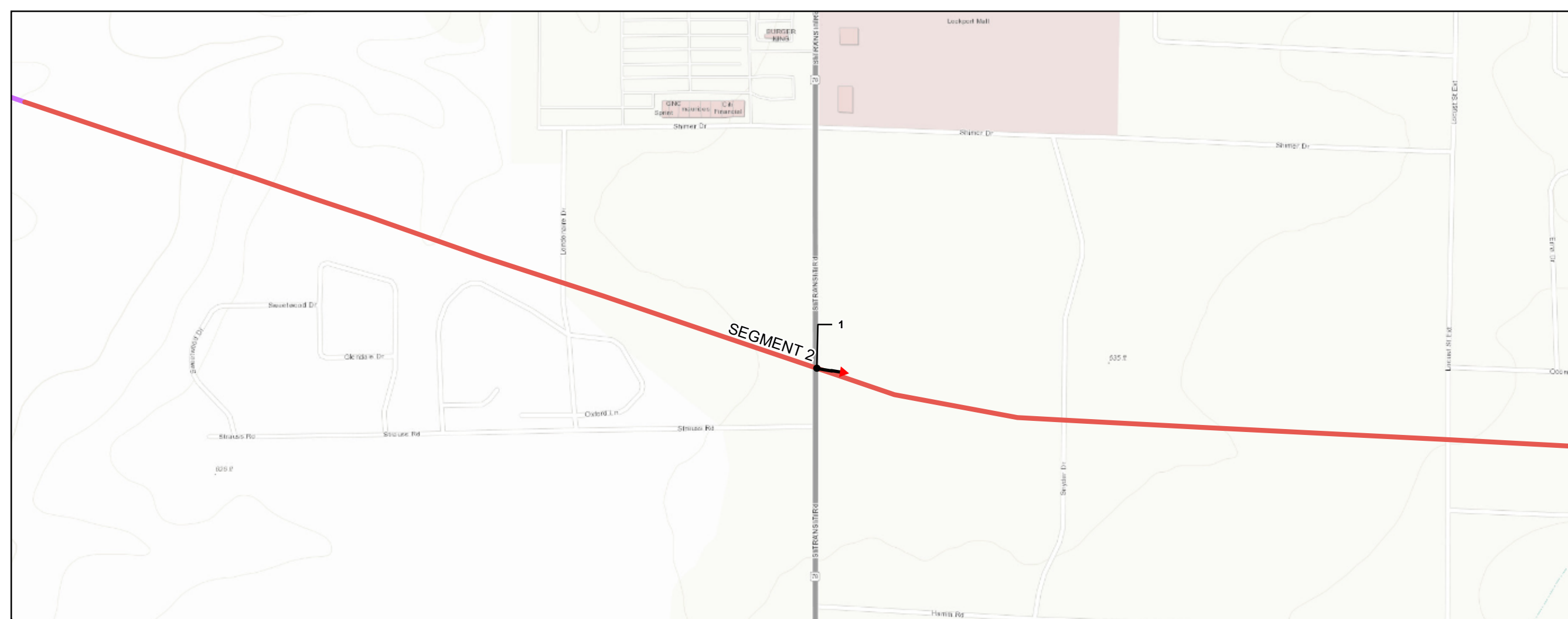
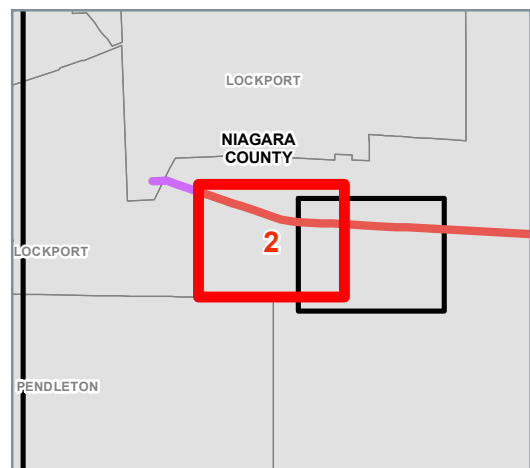
- Simulation Viewpoint
- Segment 1
- Segment 2
- Segment 3
- Segment 4 Existing
- Segment 4 Relocated
- Segment 5
- Segment 6
- Segment 7
- Town Boundary
- County Boundary

Map Revision Date: 8/19/2021

Aerial Date: 8/19/2021



0 260 520 Feet



Existing Conditions

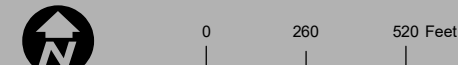
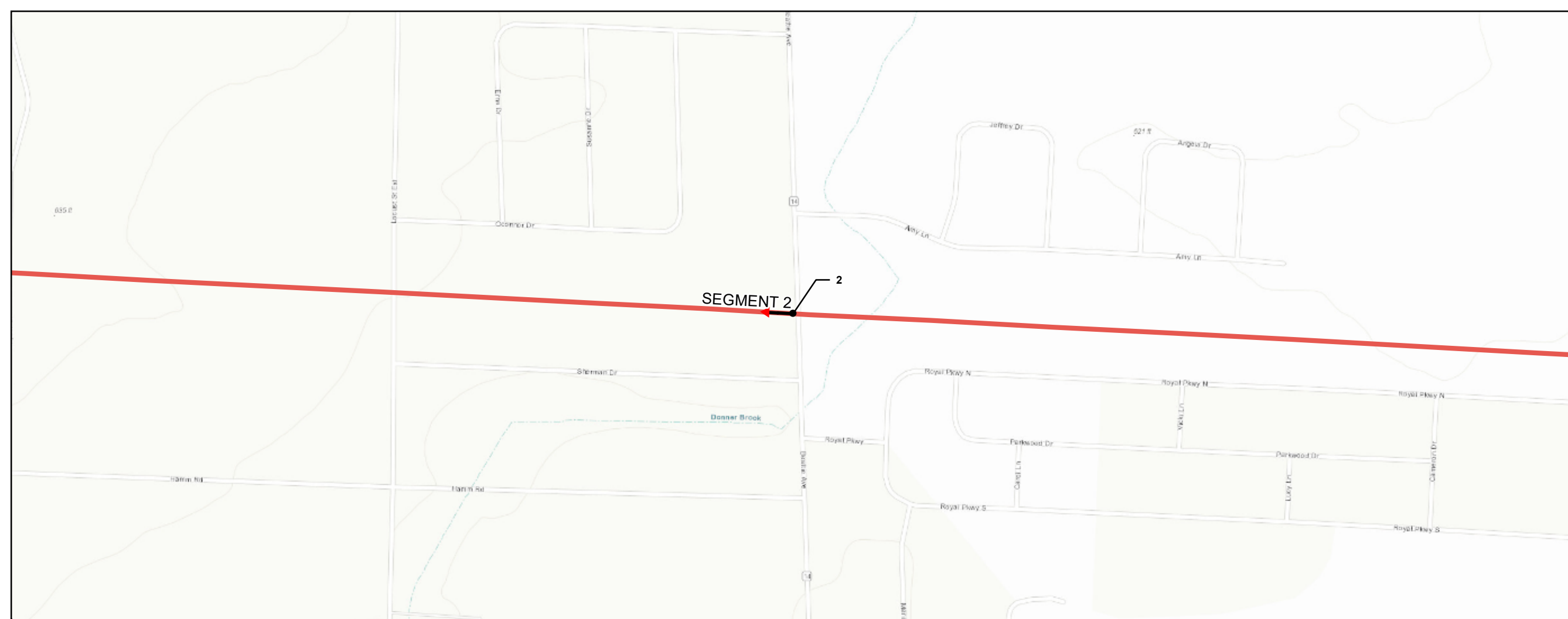
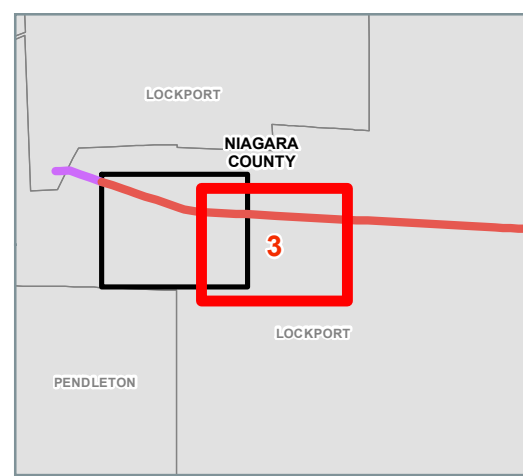


Proposed Conditions

Viewpoint 1 - S. Transit Rd, Lockport - Segment 2

-  Simulation Viewpoint
-  Segment 1
-  Segment 2
-  Segment 3
-  Segment 4 Existing
-  Segment 4 Relocated
-  Segment 5
-  Segment 6
-  Segment 7
-  Town Boundary
-  County Boundary

Map Revision Date: 8/19/2021 Aerial Date: 8/19/2021

Existing Conditions



Proposed Conditions

Viewpoint 2 - Beattie Ave, Lockport - Segment 2

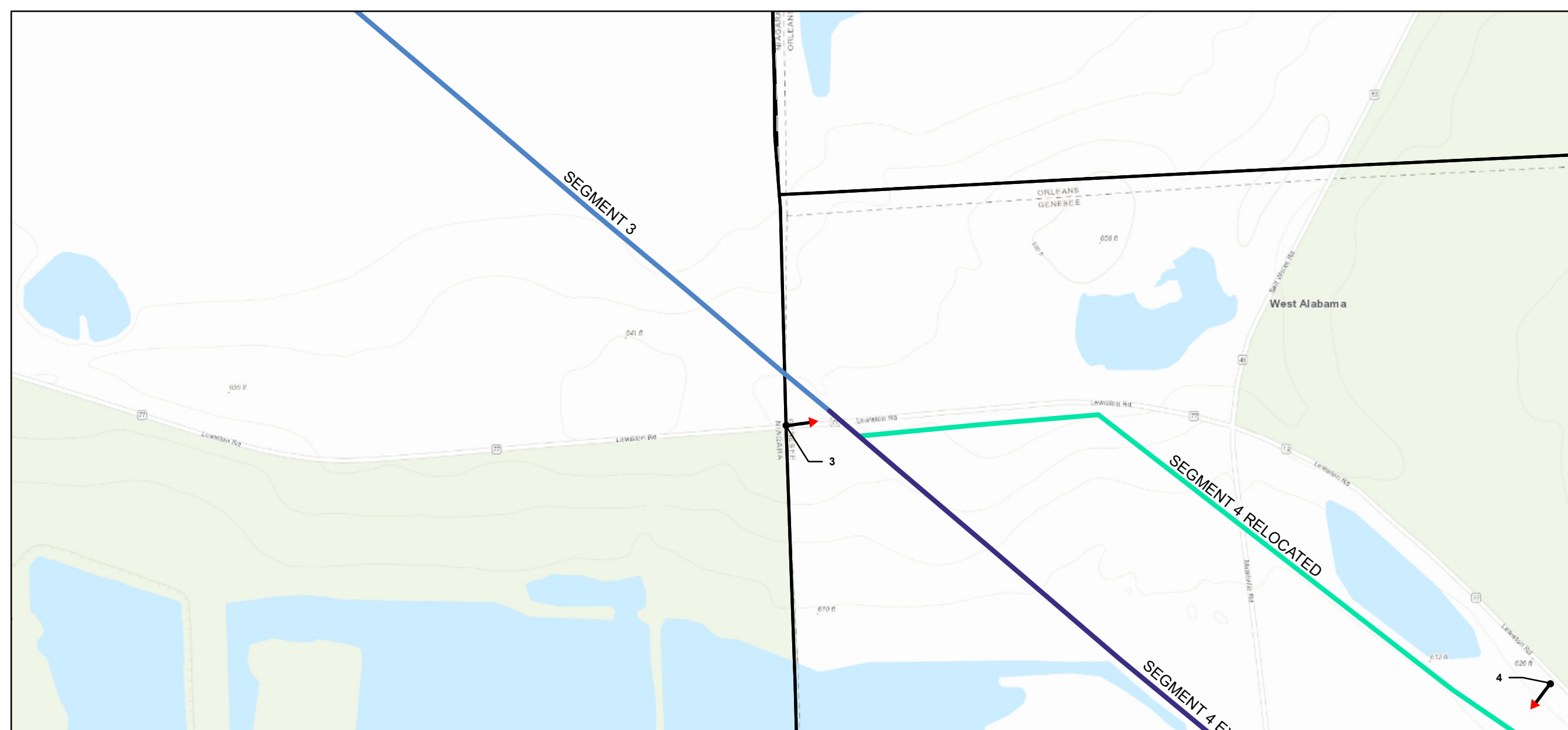
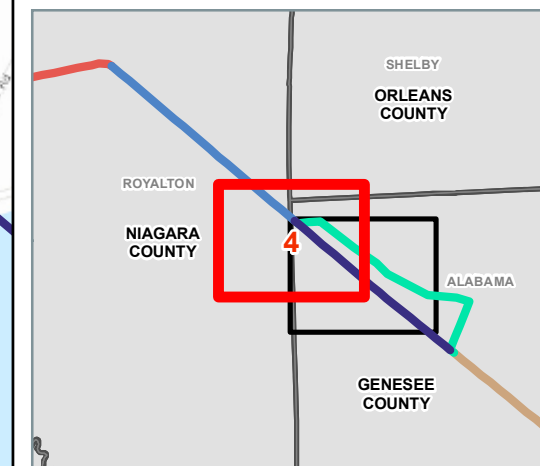
- Simulation Viewpoint
- Segment 1
- Segment 2
- Segment 3
- Segment 4 Existing
- Segment 4 Relocated
- Segment 5
- Segment 6
- Segment 7
- Town Boundary
- County Boundary

Map Revision Date: 8/19/2021

Aerial Date: 8/19/2021



0 260 520 Feet



Existing Conditions



Proposed Conditions

Viewpoint 3 - Lewiston Rd, Alabama - Segment 4

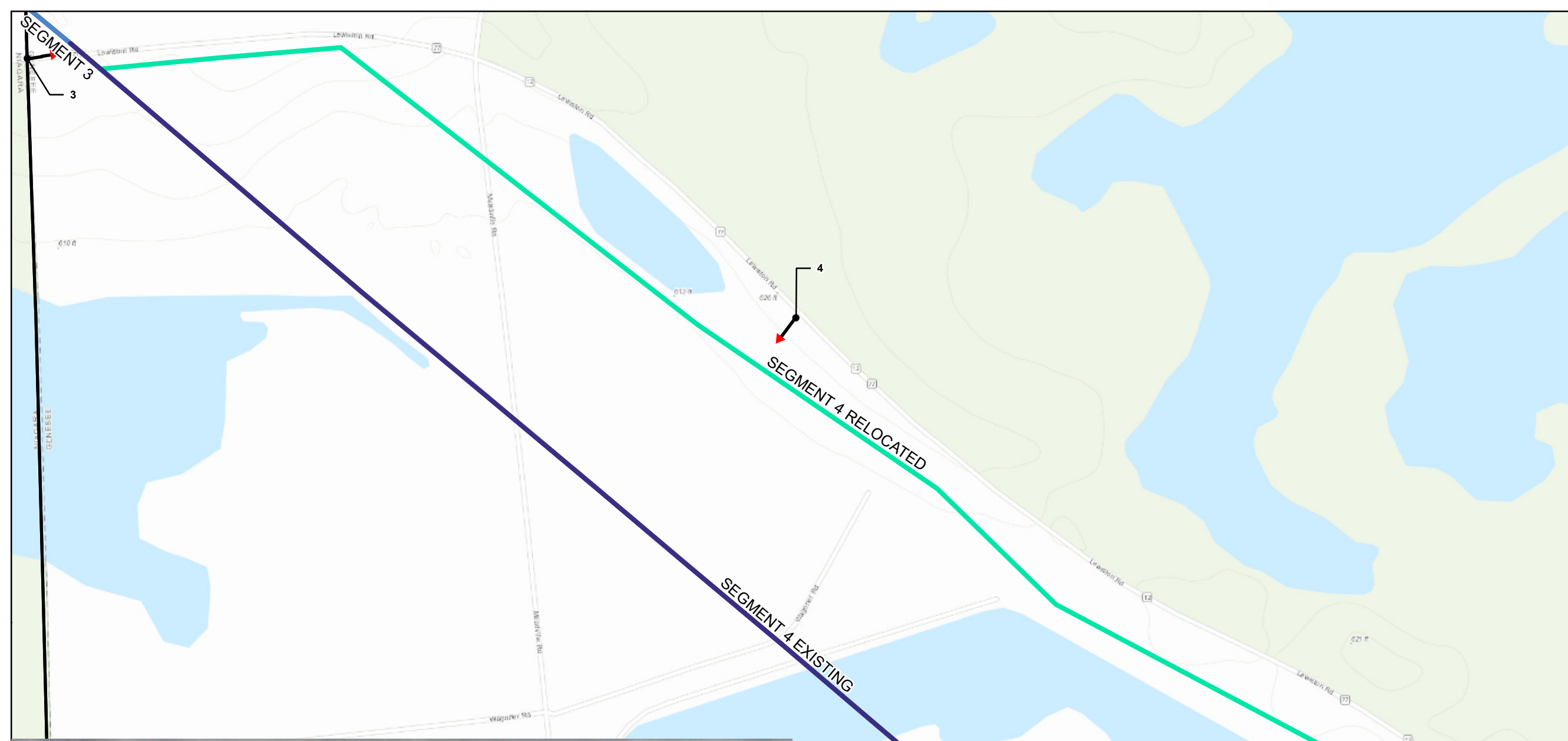
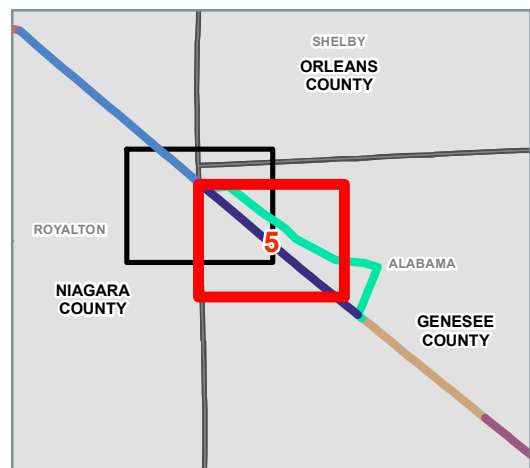
-  Simulation Viewpoint
-  Segment 1
-  Segment 2
-  Segment 3
-  Segment 4 Existing
-  Segment 4 Relocated
-  Segment 5
-  Segment 6
-  Segment 7
-  Town Boundary
-  County Boundary

Map Revision Date: 8/19/2021

Aerial Date: 8/19/2021



0 260 520 Feet



Existing Conditions



Proposed Conditions

Viewpoint 4 - Lewiston Rd, Alabama - Segment 4

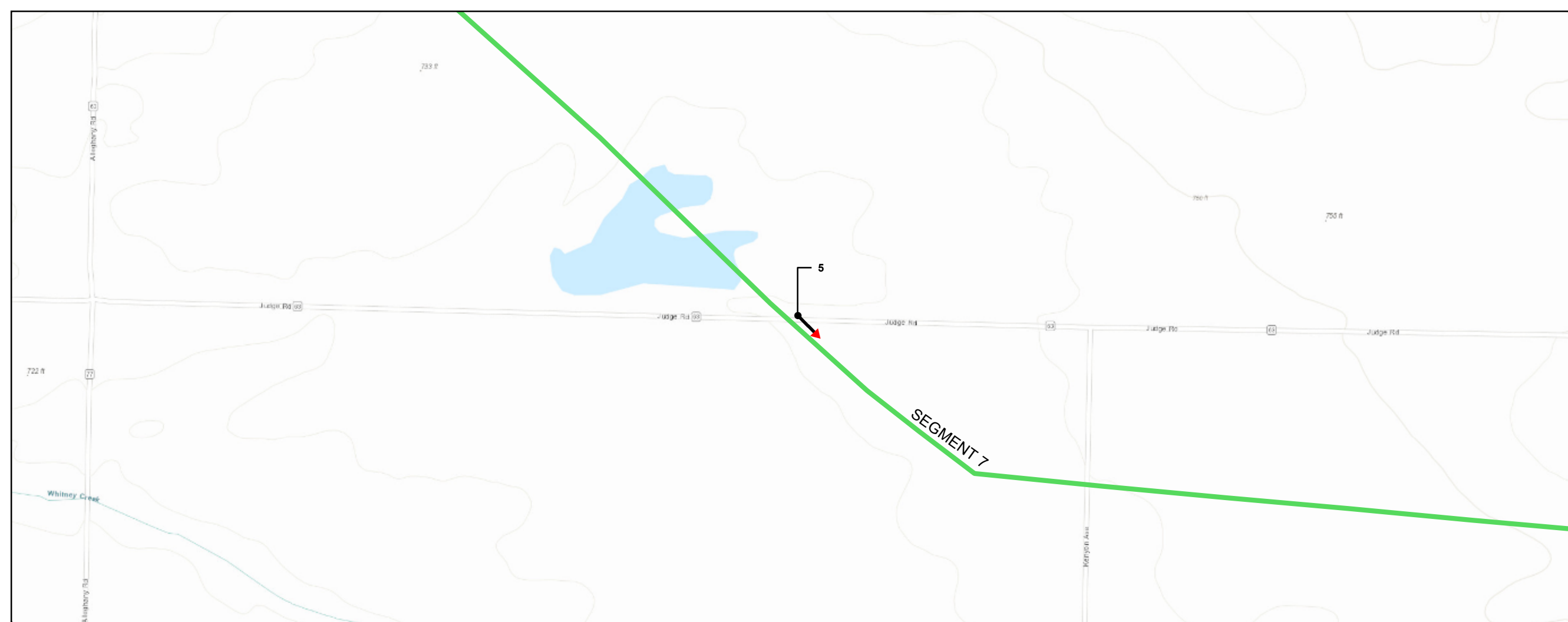
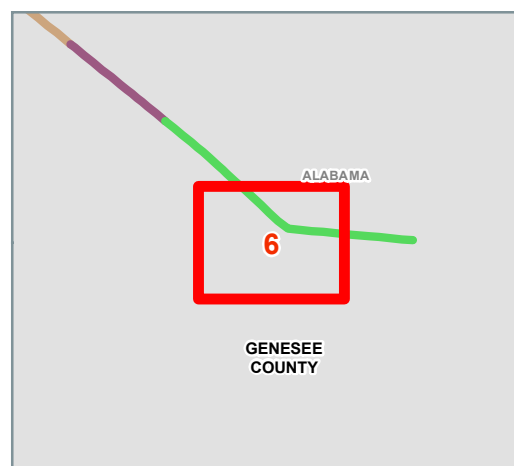
-  Simulation Viewpoint
-  Segment 1
-  Segment 2
-  Segment 3
-  Segment 4 Existing
-  Segment 4 Relocated
-  Segment 5
-  Segment 6
-  Segment 7
-  Town Boundary
-  County Boundary

Map Revision Date: 8/19/2021

Aerial Date: 8/19/2021



0 260 520 Feet



Existing Conditions



Proposed Conditions

Viewpoint 5 - Lewiston Rd, Alabama - Segment 7